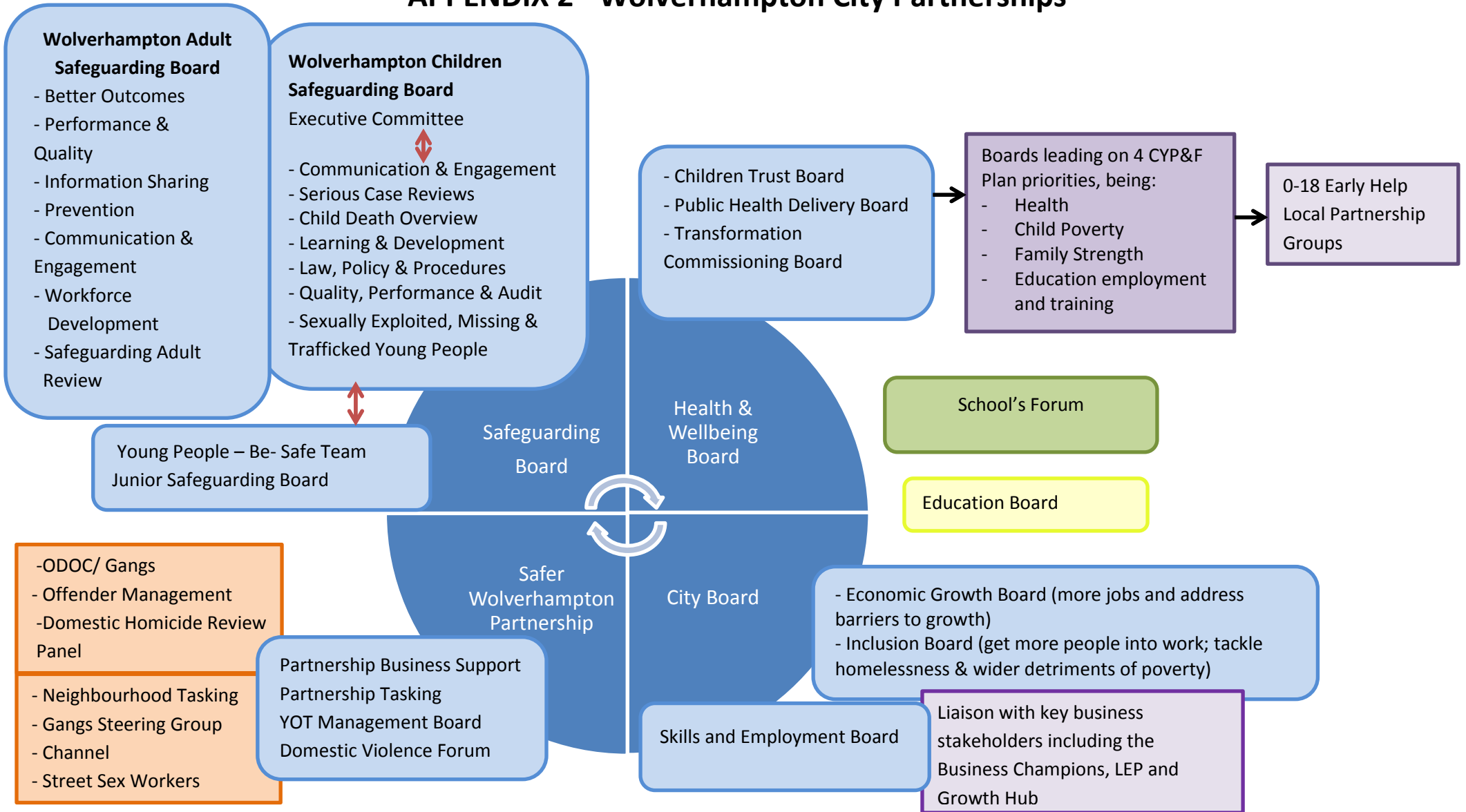


APPENDIX 2 - Wolverhampton City Partnerships

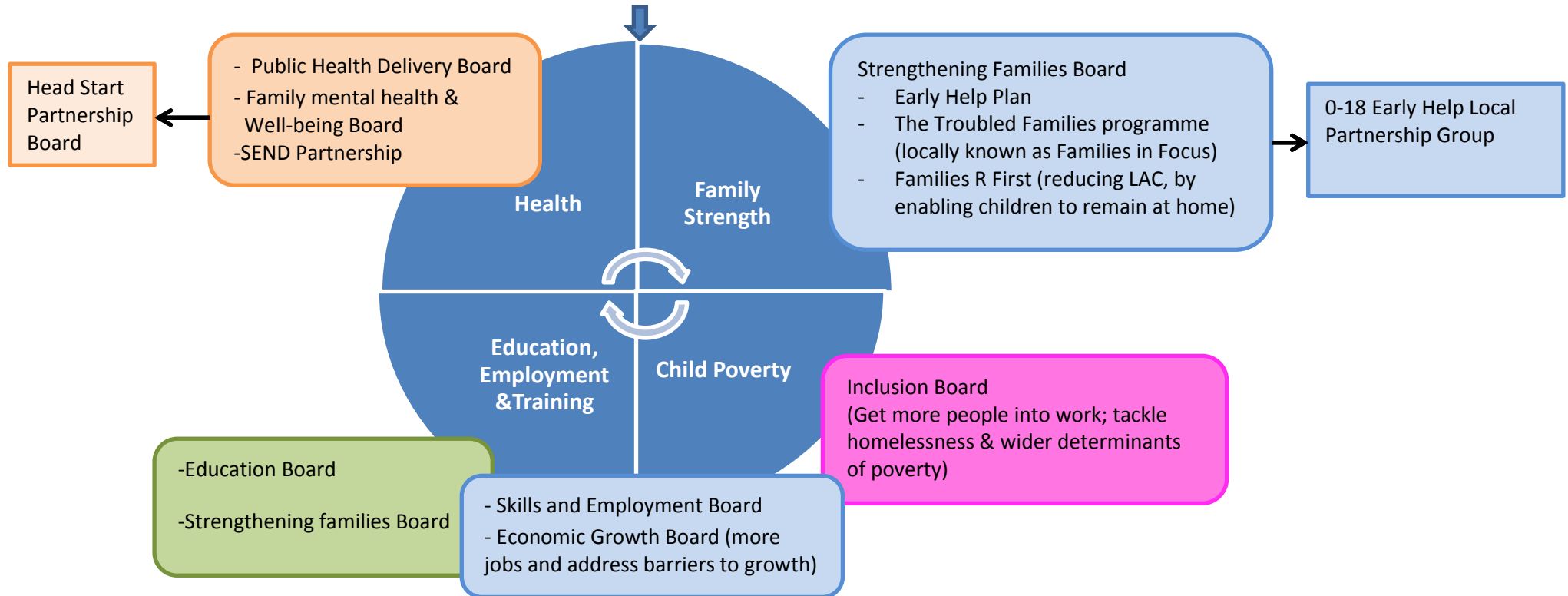


STATUTORY HEALTH & WELLBEING BOARD

RESPONSIBILITIES; Joint Strategic Needs Assessment, Joint Commissioning Health & Wellbeing Strategy & Health Improvement Plan, GP Consortium accountability, Health Watch, Public Health, overview of Safeguarding, Annual Plans, Support local voice and patient choice.

Wolverhampton Children Trust Board

RESPONSIBILITIES; Developing and delivering outcomes of the Children, Young People & Families Plan 2015-25.
4 strategic priorities; Health, Child Poverty, Family Strength, Education Training & Employment.



This is also linked to the following strategies: Council's Corporate Plan, City Strategy, Children Young People & Families Plan, Child Poverty Strategy, Local Policing & Crime Plan, Early Help Plan, Sufficiency Strategy, Corporate Parenting Strategy, Violence against Women & Girls Strategy, Reducing Gang Harm Strategy, Alcohol Strategy.